

Fixing angles

P 63A / P 800B and R 63A / R 800C

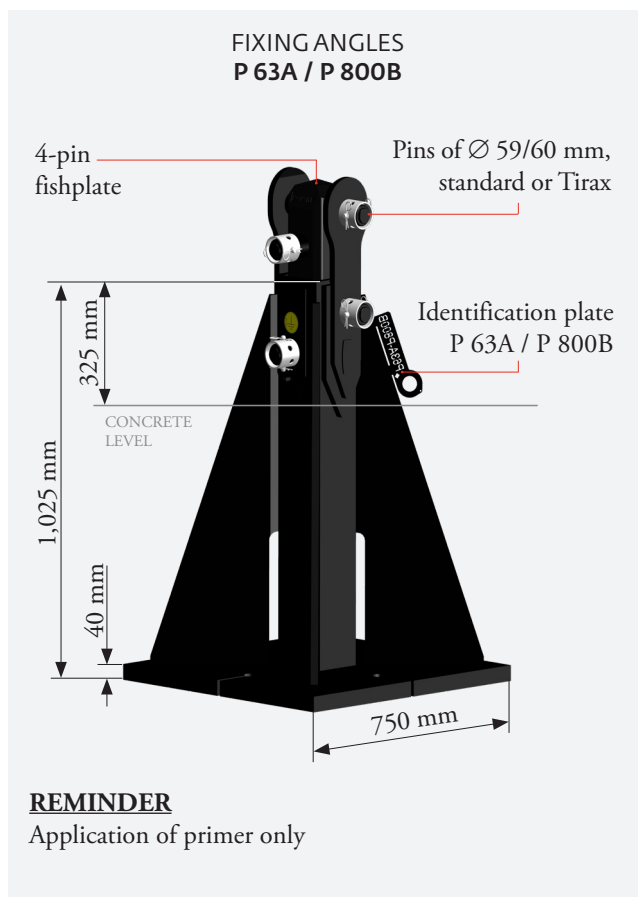
Flash Produit

New fixing angle offer - 2 m K600 type masts

The P 800B and R 800C fixing angles can now be used on the masts of 2 m (K600) and 2.45 m (K800) cross-section.

Their trade names are therefore as follows:

- P 63A / P 800B (for the non-reusable version)
- R 63A / R 800C (for the reusable version)



N.B.:

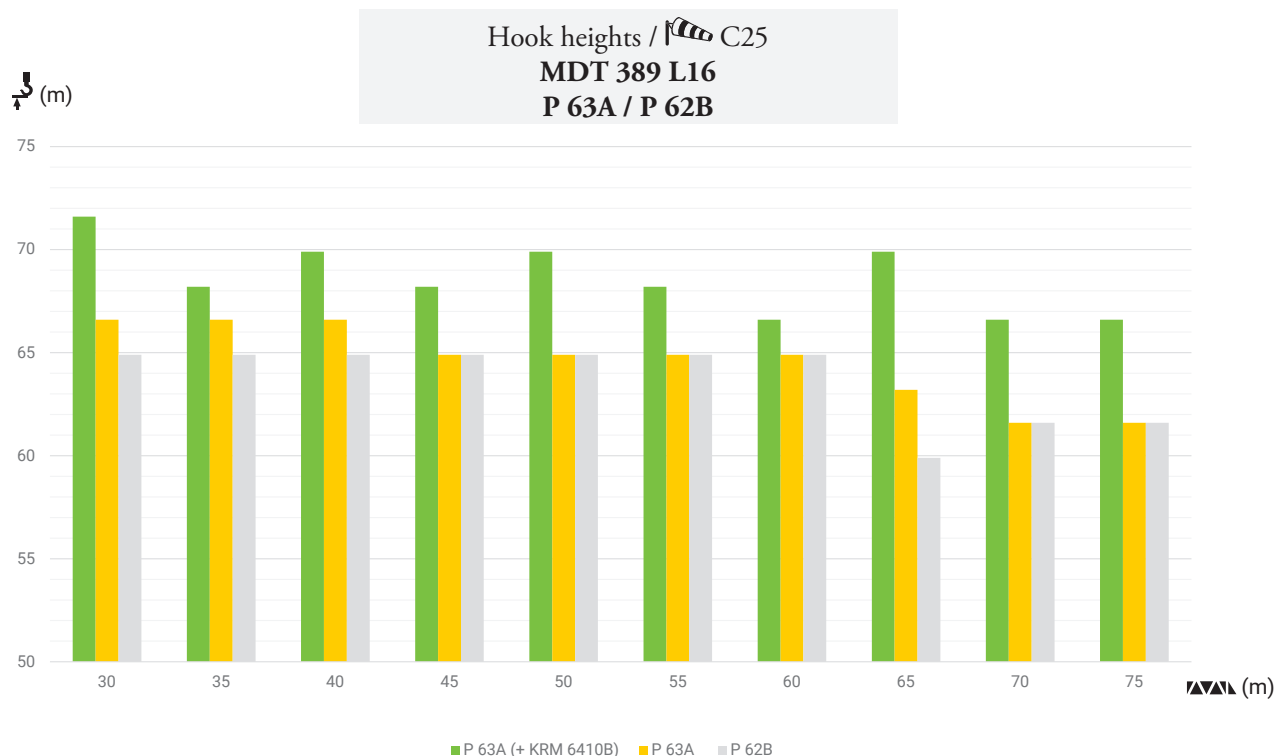
The 2 m template (price code CS031) used for positioning the P 61B, P 62B, and R 62B fixing angles is not compatible with the P 63A / P 800B fixing angles or with the R 63A / R 800C fixing angles. It is recommended to use the first mast section for correct positioning.

The 2.45 m, D60 mm template (price code CS034) remains usable for a 2.45 m cross-section.

The R 63A / R 800C reusable fixing angles replace the R 62B fixing angles, which are no longer being sold.


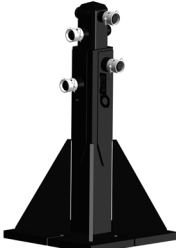
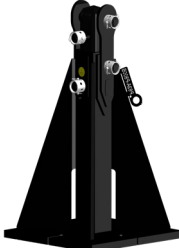

PERFORMANCE LEVELS

These fixing angles, reinforced compared with P 62B and R 62B, significantly improve the hook heights of the cranes on 2 m masts, especially when associated with the new KRM 6410B reinforced mast.



SALES

- The fixing angle offer for 2 m mast sections is now available as follows:

FIXING ANGLES			REUSABLE FIXING ANGLES
P 61B  <u>Price codes</u> PS094 PS071 (without fishplate)	P 62B  <u>Price codes</u> PS095 PS072 (without fishplate)	P 63A / P 800B NEW  <u>Price codes</u> PS112 PS077 (without fishplate)	R 63A / R 800C NEW  <u>Price codes</u> PS141

- P 63A / P 800B and R 63A / R 800C fixing angles can be ordered immediately.